



# Electron Top Mfg.

rev 9/10/2010

## Installation Instructions

**Always Check Stock # and Color Before Starting Installation**



**2000-05 Mitsubishi Eclipse Spyder  
MI 5220 Top  
ST11 Blk/Blk Stayfast or Topline Material**

**MI5220 ST11 10 10**

**Stayfast Black/Blk**



(MAKE LABELS) ONLY

**GLASS  
HEATED**

DATE: 11/01

**MI5220 ST11**

2000-05 Mitsubishi Eclipse.....  
Spider..Top + Glass .....



**Always check the stock number and color before  
you start the installation.**

126-15 89th Ave Richmond Hill, NY 11418

No part of this material or accompanying drawings or photos may be reproduced in any form, or by any means, without the express permission of *Electron Top Mfg.*

# Electron Top Mfg.



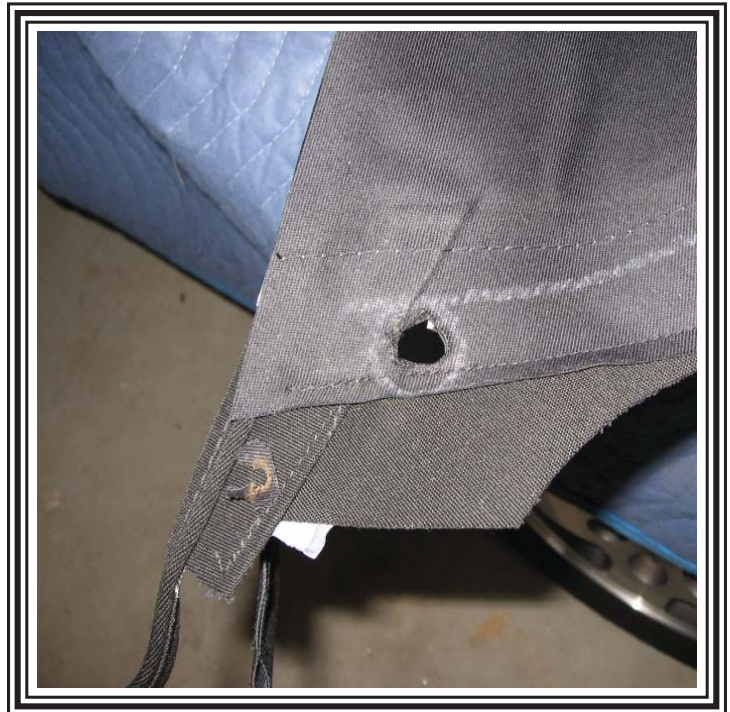
**This is a view of the rear quarter window. When taking the rear trim stick loose, the rear quarter windows need to be up or the rear trim sticks will scratch the window.**



**Take the rear trim stick loose and disconnect the wire.**



**This is a view of the wire connection.**



**Cut out a hole in the white circle that is drawn on the bottom of the quarters. Next staple the bottom of the quarters to the rear trim stick lining up the hole on each side.**

# Electron Top Mfg.



**This is a view of that area stapled.**



**Zoom out view of previous picture.**

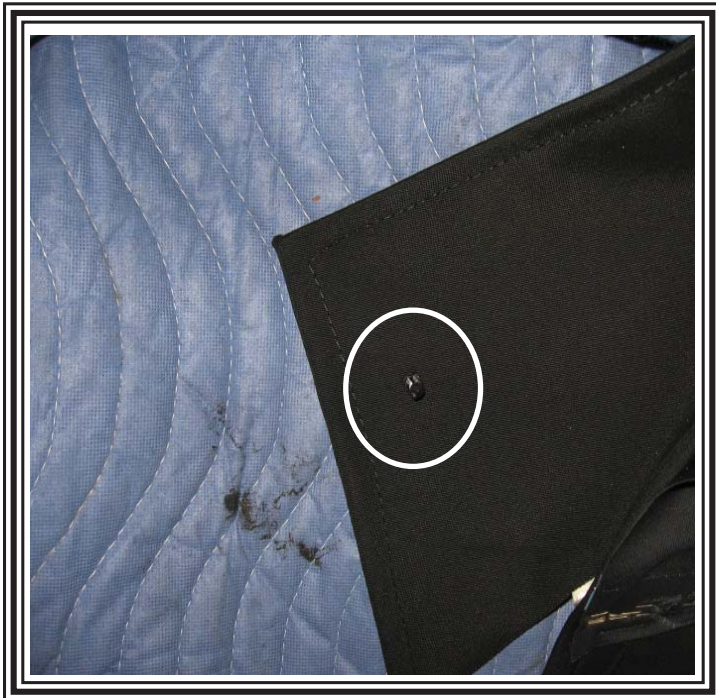


**Staple the center of the top to the trim stick making sure the line is at the top of the trim stick, then work your way around each side.**



**This view is the stapled passenger side of top installation.**

# Electron Top Mfg.



The big flaps at the bottom of the quarters need a hole cut or punched in these flaps for the plastic clip. (We mark it with a white hole)



At the top of these big flaps there are two white circles about 1/4" apart. Punch holes for two screws.



Find the wire and plug it back into the connector.



You then can reinstall the rear trim stick.

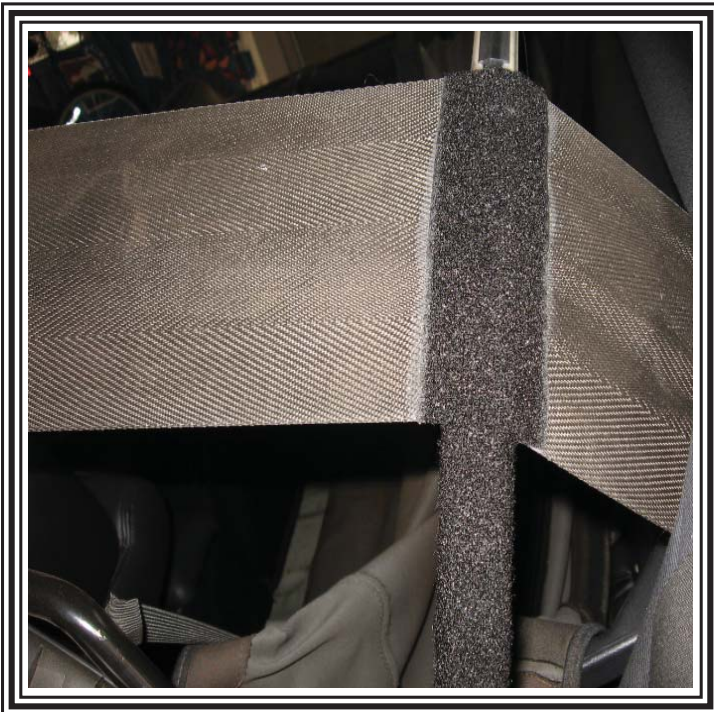
# Electron Top Mfg.



**Screw in the two screws at the bottom of each of the quarters.**



**Pad out the rear bow on the corners using self sticking velcro pile. It helps protect the top and looks better.**



**This is a closer view of the padding on the rear bow.**



**Thread the cable through the wire sleeve on the edge of the top on both sides. In this view the cable is already through.**

# Electron Top Mfg.



**This is a closer look at the cable end coming out underneath the top.**



**Attach the cable to the frame in the back of the quarters.**

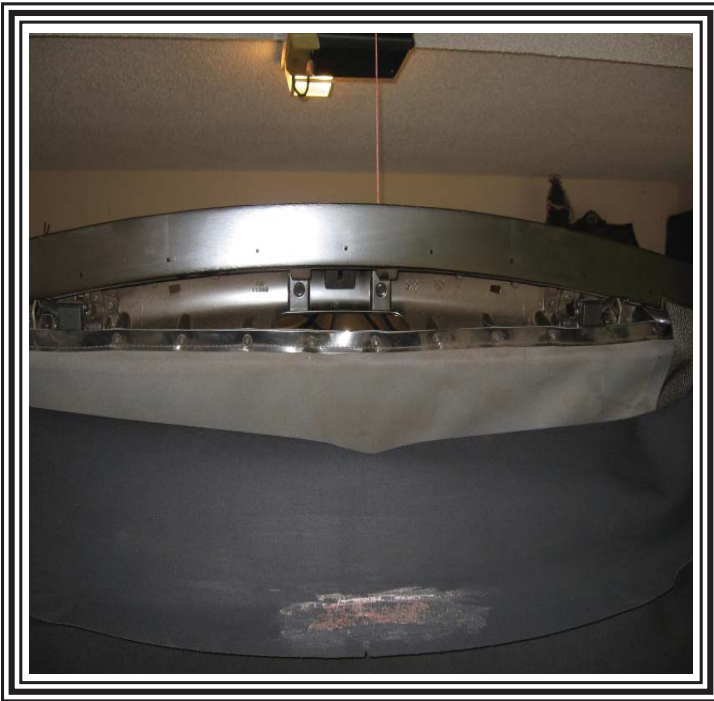


**Glue the front of the top on each side.**



**Latch the front header bow, glue all three bow listings and fasten up the headliner.**

# Electron Top Mfg.



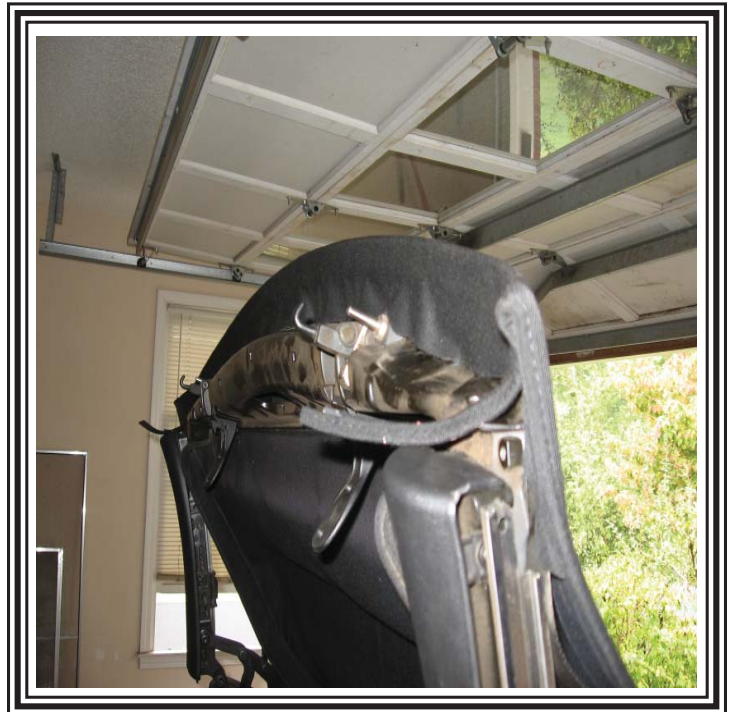
Next, let the top back and pull the front of the top loose on each side.



Start fastening the headliner to the backside of the top of the header bow.



Then re-glue the front of the top onto the header bow. Re-latch the header bow down and refasten the top.



This is a view of the area being re-glued on the header bow.

# Electron Top Mfg.



**Replace the plastic moulding on the front header bow.**



**Glue and re-attach the rear quarter channel flaps back by the quarter glass window channel (also known as the C-pillar post on most cars).**



**This view is of the same area but farther away.**



**Glue rain gutter to the body of the car.**

# Electron Top Mfg.



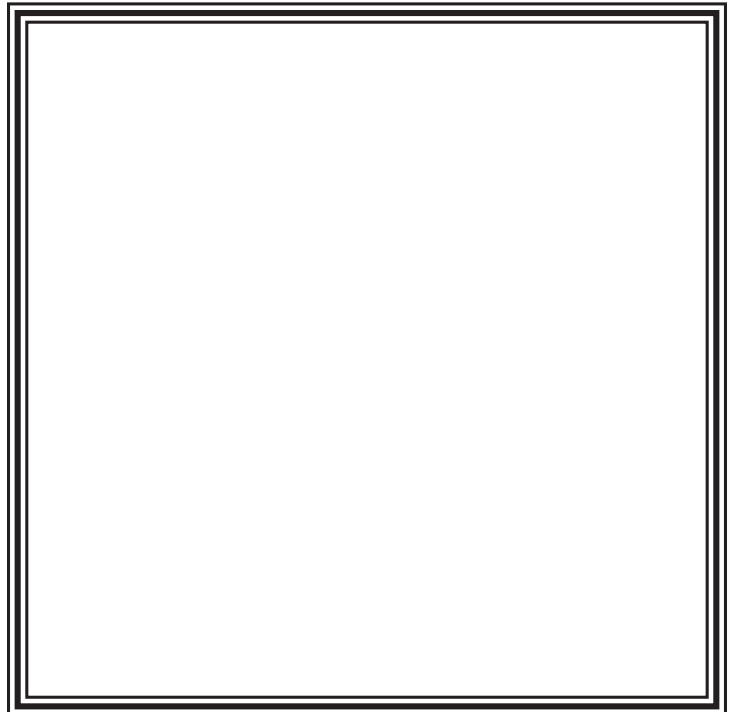
**Snap on the windlace and push it up to the body of the car.**



**Install the rear moulding onto the body of the car.**



**This view is of the same areas but at a different angle.**



# Electron Top Mfg.



**Re-install all the weather stripping.**



**This picture is the same as the left view but at a different angle.**



**This is a view of the rear passengers side.**



**This is a view of the rear passenger side.**